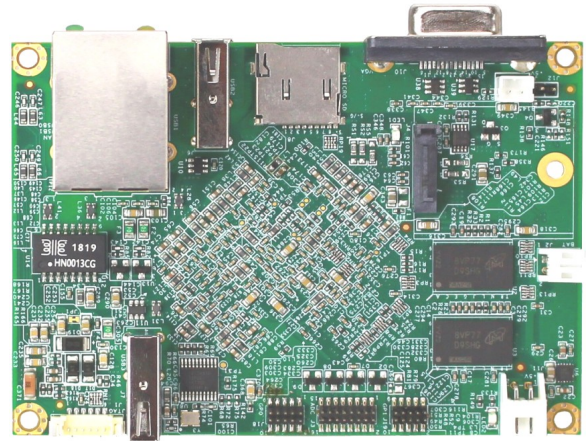
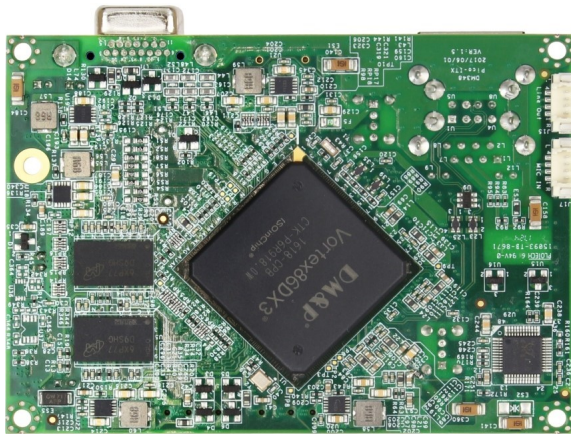


# VDX3-PITX



## Specifications

CPU	DM&P SoC Vortex86DX3 1GHz L1: 32K I-Cache, 32K D-Cache, L2 Cache: 512KB			
RAM	2GB DDR3 Onboard			
BIOS	AMI BIOS			
Display	Integrated 2D VGA chip VGA: Maximum resolution up to 1920 x 1080 @ 60Hz			
LAN	Integrated 10/100Mbps Ethernet x1			
Disk Support	SATA DOM	Micro SD		
I/O Interface	USB (ver. 2.0) x4 Audio	8-bit GPIO x2	11-bit ADC x8	
Connectors	2.0mm 8-pin header for 8-bit GPIO x2 2.0mm 2-pin wafer for Battery x1 7-pin SATA connector for SATA DOM x1 9-pin D-Sub female connector for VGA x1	2.0mm 16-pin header for ADC x1 2-pin box header for DC 5V output x1 USB connector x4 Micro SD slot x1	2.0mm 2-pin wafer for DC input x1 1.25mm 4-pin wafer for Line-out/MIC-in x2 RJ45 connector x1	
Power Requirement	DC +5V @ 1150mA			
Operating Temperature	-20°C - +70°C (Single Core) -10°C - +60°C (Dual Core)			
Dimension	100 x 72mm			
Weight	70g			
O/S Support	Windows 7 Windows XP Professional POS Ready (WePOS)	Windows Embedded Standard 7 Windows Embedded 2009 QNX	Windows Embedded Compact 7 Linux VxWorks	Windows Embedded CE6.0 DOS Free BSD

## Ordering Information

PART NO.	CPU	DRAM (DDR3)	Storage	Display	LAN	USB (ver. 2.0)	8-bit GPIO	11-bit ADC	Audio
VDX3-PITX-7S5E1	1GHz	2GB	SATA Micro SD	VGA	1	4	2	8	Line-out ,MIC-in

