

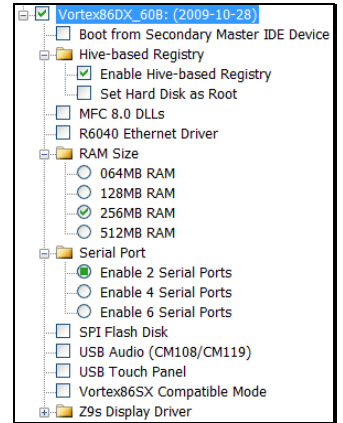
# Vortex86DX Windows CE BSP Note

2009-10-28

After installing Vortex86DX BSP for Windows Embedded CE 6.0, developer can start Windows CE development for Vortex86DX/SX boards. Here are notes for your reference:

## Install QFE

Visit <http://msdn.microsoft.com/en-us/embedded/aa731256.aspx> to download QFE from Microsoft. Install QFE “Cumulative Product Update Rollup Package (through 12/31/2008)” and “Windows Embedded CE 6.0 Monthly Updates” to fix a lot of bugs. If more new QFE is available, please install them.



(Vortex86DX BSP Options)

## IDE Issue for Vortex86DX Version C/D

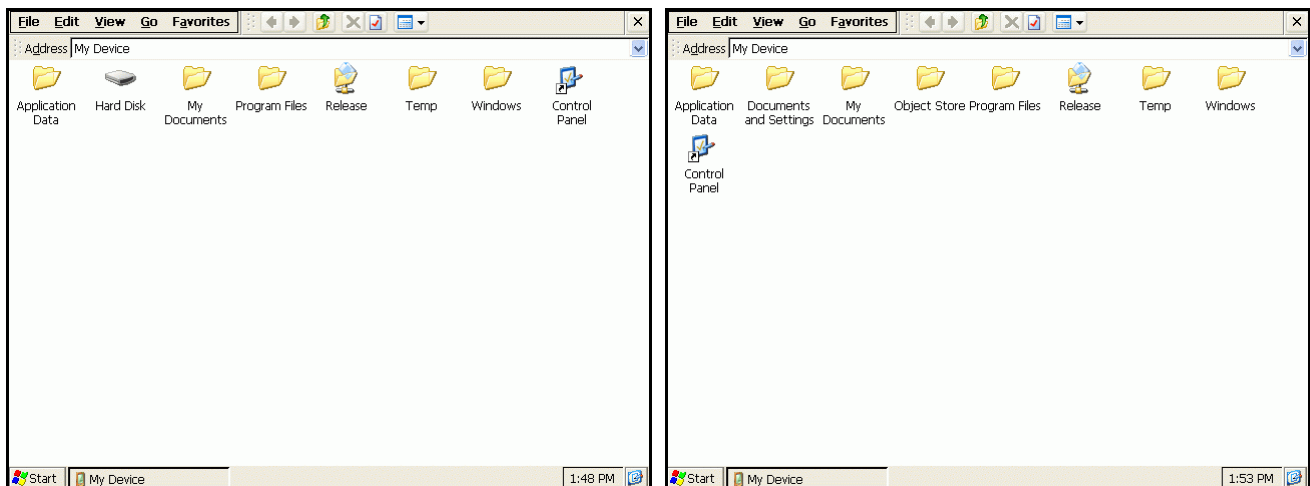
In order to make IDE work on Vortex86DX version C/D, please set IDE as native mode in BIOS.

## Boot from Secondary Master IDE Device

Some CF or DOM on Vortex86SX/DX board is set as master device of secondary IDE (for example: eBox-3300A). Please enable this option to make them work properly.

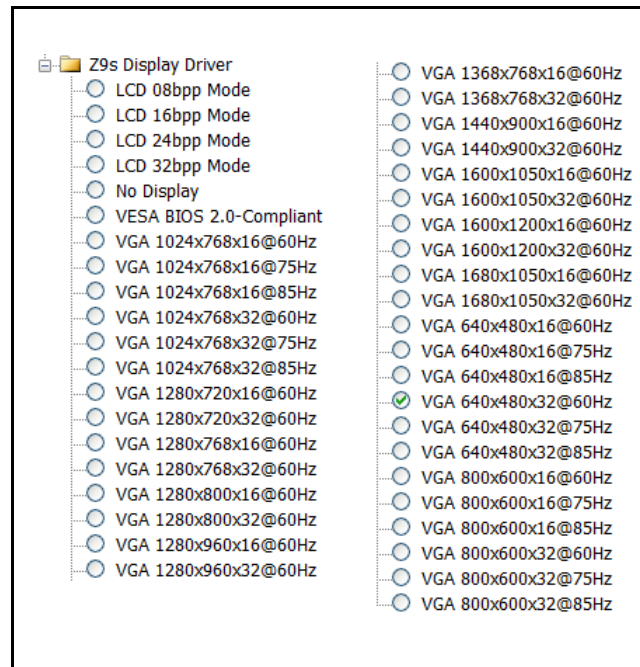
## Hive-based Registry

If developer need hive-based registry to save settings in storage, enable this option in BSP to add essentials components. Registry will saved onto hard disk as left picture. If “Set hard disk as root” is checked, Windows CE will use DOM or hard disk as root (right picture). It needs more time to boot because Windows CE will extract image onto hard disk. Any change to root will be saved.



## XGI Z9s Display Driver

Z9s graphic chipset is for most Vortex86DX boards with video function. Vortex86DX BSP will not add XGI Z9s display driver by default. If your evaluation boards have video function, select one display resolution.



## Vortex86SX

For Vortex86SX users, please select “Vortex86SX Compatible Mode” in BSP to enable floating point emulation in Windows CE image.

## R6040 Ethernet

R6040 is the built-in 10/100Mb Ethernet in Vortex86DX SoC. In order to use KITL to debug, please use eboot.bin at “Vortex86DX\_60A\Src\Bootloader\Boot\bin”.

## Serial Ports

Debug serial port on COM1 is disabled in BSP. If you need it, edit function OEMInitDebugSerial () in “\WINCE600\PLATFORM\Vortex86DX\_60A\SRC\DRIVERS\OTHER\debug.c” to remove line 197.

## History

2009-10-28

- Support Vortex86DX version C/D.
- Add VESA VGA option in BSP.
- Add SPI flash disk support.

2009-08-20

- Add “No Display” option in Z9s driver.
- Support new IDE for Vortex86DX version C/D.

2009-03-24

- Fix registry settings for 4 serial port work together.

2009-03-19

- Fix registry settings for 4th serial port.

2009-03-03

- Add “Mount as Root” option for hive-based registry.

2009-02-17

- Fix: hive-based registry issue.

2009-01-22

- Add options for MFC 8.0 and 64M RAM size.
- Fix: booting from secondary master IDE device issue.

2008-12-25

- Add options for display resolution, USB audio, USB touch panel and RAM size.

## Technical Support

For more technical support, please visit <http://www.dmp.com.tw/tech/vortex86dx> or mail to [tech@dmp.com.tw](mailto:tech@dmp.com.tw).